
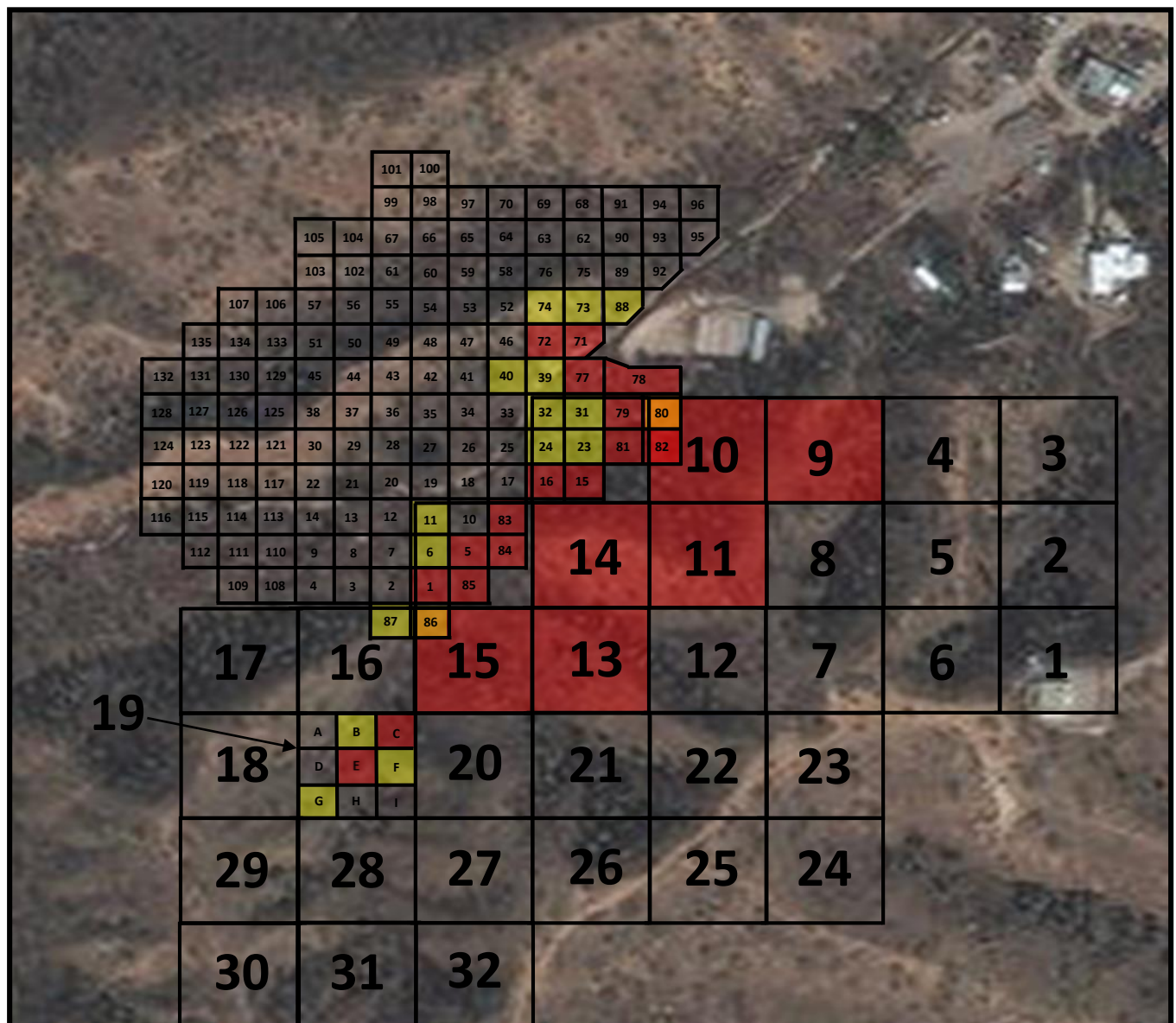
 2223 South 48 th Street, Suite A Tempe, Arizona 85282 (602) 900-4941 www.allwynllc.com	Figure 3: Surface Samples Containing Lead in Concentrations Exceeding SRLs	Trust #7569 885 W. Bell Rd., Suite 100 Nogales, Arizona 85621	 N Not to Scale
	Additional Soil Assessment Trust #7659 Property, LLC; APN 113-49-002B, 113-49-027A, and 113-49-027D; Nogales, Arizona		
	Project Number: 0183-0001 July 8, 2017		



19

LEGEND



Analytical Results Exceeds Lead Residential SRL (>400 mg/kg)



Analytical Results Exceeds Lead Non-Residential SRL (>800 mg/kg)

KEY

mg/kg : milligrams per kilogram

SRL : Soil Remediation Levels Established by the Arizona Department of Environmental Quality

Metals analyzed using EPA Method 6010B



2223 South 48th Street, Suite A
Tempe, Arizona 85282
(602) 900-4941
www.allwynllc.com

Figure 4: Subsurface Samples Containing Lead in Concentrations Exceeding SRLs

Additional Soil Assessment

Trust #7659 Property, LLC; APN 113-49-002B, 113-49-027A, and 113-49-027D; Nogales, Arizona

Project Number: 0183-0001

July 8, 2017

Trust #7569

885 W. Bell Rd.,
Suite 100
Nogales, Arizona
85621



Not to Scale